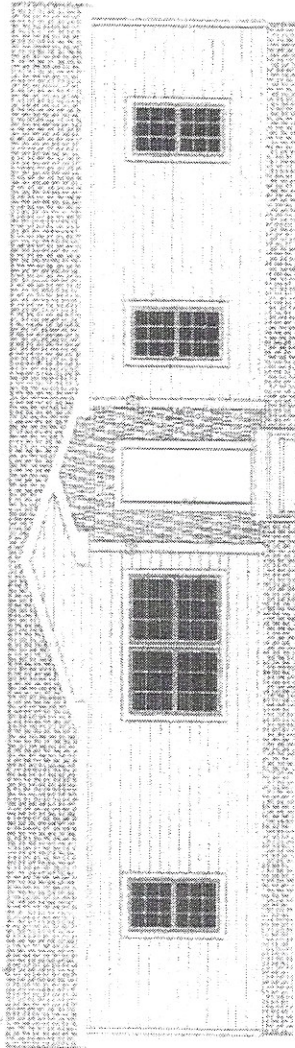
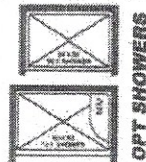
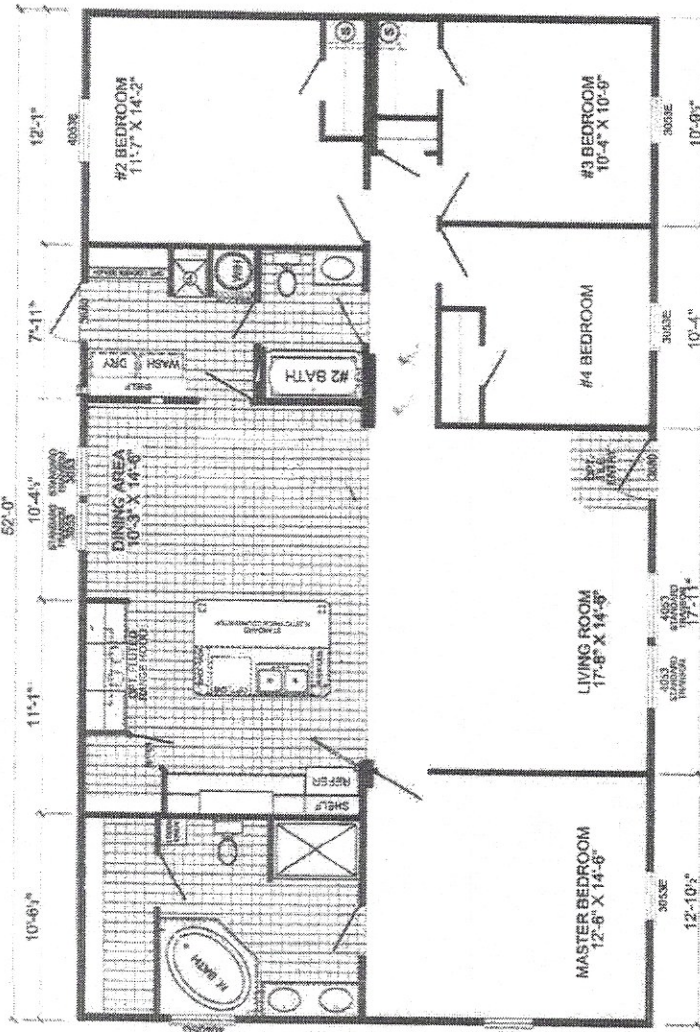


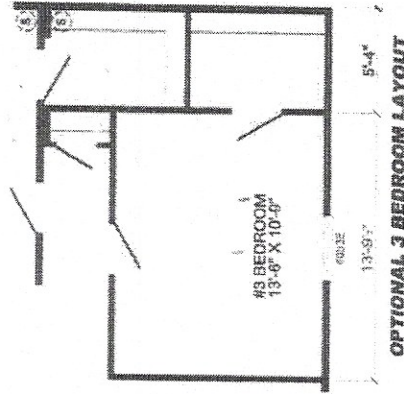
DUKE



EXTERIOR VINYL SHAKER PACKAGE
(STD)



OPT SHOWERS



OPTIONAL 3 BEDROOM LAYOUT

U-3524D-OAK 4-BEDROOM / 2-BATH 32 X 56 - Approx. 1525 Sq. Ft.

Date: 05/23/19
 * All room dimensions include closets and square footage figures are approximate.
 * Transoms windows are available on optional 9'-0" side wall houses only.
 * Underlayment shown is optional.
 * Live Oak Homes reserves the right to modify product offering at any time.

OAKS
Signature
 Series